

Member of the ZEN group

PBI INTERNATIONAL
ZEN BEARINGS FOR YOUR FUTURE

We now stock Solid Ceramic Bearings In Silicon Nitride (Si3N4) and Zirconia (ZrO2)

607-CE-SI3N4-PFTE-ZEN
608-CE-SI3N4-PFTE-ZEN
609-CE-SI3N4-PFTE-ZEN

626-CE-SI3N4-PFTE-ZEN
627-CE-SI3N4-PFTE-ZEN
628-CE-SI3N4-PFTE-ZEN

6000-CE-SI3N4-PFTE-ZEN
6001-CE-SI3N4-PFTE-ZEN
6002-CE-SI3N4-PFTE-ZEN
6003-CE-SI3N4-PFTE-ZEN
6004-CE-SI3N4-PFTE-ZEN
6005-CE-SI3N4-PFTE-ZEN
6006-CE-SI3N4-PFTE-ZEN
6007-CE-SI3N4-PFTE-ZEN
6008-CE-SI3N4-PFTE-ZEN

6200-CE-SI3N4-PFTE-ZEN
6201-CE-SI3N4-PFTE-ZEN
6202-CE-SI3N4-PFTE-ZEN
6203-CE-SI3N4-PFTE-ZEN
6204-CE-SI3N4-PFTE-ZEN
6205-CE-SI3N4-PFTE-ZEN
6206-CE-SI3N4-PFTE-ZEN

6300-CE-SI3N4-PFTE-ZEN
6301-CE-SI3N4-PFTE-ZEN
6302-CE-SI3N4-PFTE-ZEN
6303-CE-SI3N4-PFTE-ZEN
6304-CE-SI3N4-PFTE-ZEN

6802-CE-SI3N4-PFTE-ZEN
6803-CE-SI3N4-PFTE-ZEN
6804-CE-SI3N4-PFTE-ZEN
6805-CE-SI3N4-PFTE-ZEN
6806-CE-SI3N4-PFTE-ZEN

6900-CE-SI3N4-PFTE-ZEN
6901-CE-SI3N4-PFTE-ZEN
6902-CE-SI3N4-PFTE-ZEN
6903-CE-SI3N4-PFTE-ZEN
6904-CE-SI3N4-PFTE-ZEN

607-CE-ZRO2-PFTE-ZEN
608-CE-ZRO2-PFTE-ZEN
609-CE-ZRO2-PFTE-ZEN

626-CE-ZRO2-PFTE-ZEN
627-CE-ZRO2-PFTE-ZEN
628-CE-ZRO2-PFTE-ZEN

6000-CE-ZRO2-PFTE-ZEN
6001-CE-ZRO2-PFTE-ZEN
6002-CE-ZRO2-PFTE-ZEN
6003-CE-ZRO2-PFTE-ZEN
6004-CE-ZRO2-PFTE-ZEN
6005-CE-ZRO2-PFTE-ZEN
6006-CE-ZRO2-PFTE-ZEN
6007-CE-ZRO2-PFTE-ZEN
6008-CE-ZRO2-PFTE-ZEN

6200-CE-ZRO2-PFTE-ZEN
6201-CE-ZRO2-PFTE-ZEN
6202-CE-ZRO2-PFTE-ZEN
6203-CE-ZRO2-PFTE-ZEN
6204-CE-ZRO2-PFTE-ZEN
6205-CE-ZRO2-PFTE-ZEN
6206-CE-ZRO2-PFTE-ZEN

6300-CE-ZRO2-PFTE-ZEN
6301-CE-ZRO2-PFTE-ZEN
6302-CE-ZRO2-PFTE-ZEN
6303-CE-ZRO2-PFTE-ZEN
6304-CE-ZRO2-PFTE-ZEN

6802-CE-ZRO2-PFTE-ZEN
6803-CE-ZRO2-PFTE-ZEN
6804-CE-ZRO2-PFTE-ZEN
6805-CE-ZRO2-PFTE-ZEN
6806-CE-ZRO2-PFTE-ZEN

6900-CE-ZRO2-PFTE-ZEN
6901-CE-ZRO2-PFTE-ZEN
6902-CE-ZRO2-PFTE-ZEN
6903-CE-ZRO2-PFTE-ZEN
6904-CE-ZRO2-PFTE-ZEN

Items not listed available on request.

Full Solid Ceramic Bearings

- ✓ Longer lasting
- ✓ Less friction
- ✓ Harder wearing
- ✓ Corrosion resistant

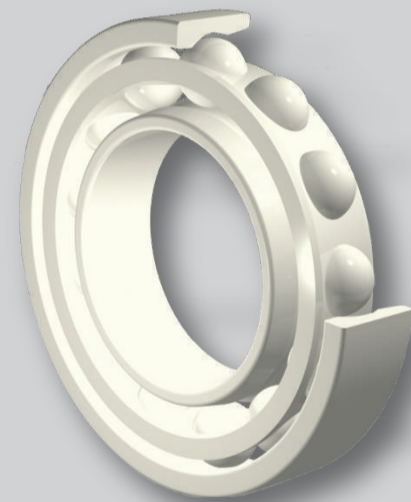
Full Ceramic bearings are normally used in extreme operating environments where standard bearings fail.

The advantage of solid Ceramic Bearings is that they are corrosion resistant, non magnetic, non conductive and can withstand extreme heat.

The two most widely used materials for solid ceramic bearings is Silicon Nitride (Si3N4) and Zirconia (ZrO2).

PTFE and Peek cages are used for full ceramic bearings, both cage types are temperature resistant up to +260 C. The peek material is a harder material used mainly in higher temperature and anti chemical applications. PTFE cages are used mainly for high temperature and electrical solutions. The advantage of PTFE is low friction, absorbing high temperatures and good wearability.

For high temperature applications the solid Ceramic bearings are supplied without cage so that they can withstand temperatures of +400 C.



Solid ceramics are recommended for high temperature, electrical and chemical applications such as:

- Voltage isolated electrical motors
- Gas turbine engines
- Chemically resistant applications
- Wet environments
- Vacuum process equipment
- Electro equipment
- Furnaces

ZEN™ For any information regarding the above, or any other ZEN products, please call us on +44 (0)1227 793334, email us on sales@ball-bearings.co.uk or visit www.zen.biz.

PBI International
Unit 2 Tyler House, Tyler Way
Whitstable, Kent CT5 2RS
Tel. +44 (0) 1227 793334 Fax. +44 (0) 1227 794166

